

# MRC(RC) Snubber Capacitor(RC--SERIES, RC--PARALLEL)

## 火花消制电容器 ( 串联, 并联)

### ★ FEATURE

- Small size with superior performance
- Suitable for PCB mounting
- Ideal for AC or DC application
- Large product selection range with 1/4,1/2 and 1 watt resistors,0.001uF to 1.0uFcapacitors
- Providing flexible wire, tubular and box type on request

### ★ APPLICATION

- Protection for contacts from noise during switching operations of equipment
- Protection of electronic instruments during operation of relays, solenoids,motors and so on
- Electrical noise protection of semiconductor equipment during the control of triacs,transistor, motors,welders,etc

### 特点:

- 小体积、性能佳
- 可安装于 PCB
- 适用于交 / 直流
- 多种电阻功率 1/4,1/2 和 1 瓦特, 电容 0.001uF 至 1.0uF 供选择
- 可选软引线式、管状或盒子结构

### 用途:

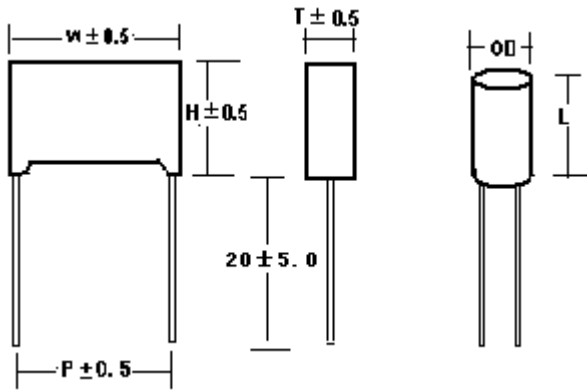
- 设备切换时, 保护触点, 消除火花及噪音
- 接触器, 继电器, 电机等操作时保护电子设备
- 消除晶闸管, 电晶体, 电机, 焊接机等半导体设备之电谐干扰

### ★ SPECIFICATIONS 技术要求:

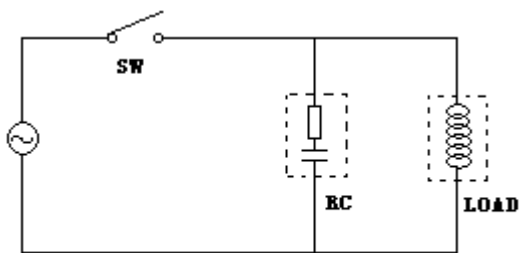
DIELECTRIC 介质	Metallized polypropylene film 金属化聚丙烯薄膜
RESISTOR 电阻	Non-inductive,high pulse resistor 无感型, 耐脉冲电阻
LEADS 导线	Tinned wire or polyvinylchloride(PVC)insulation stranded copper wire 径向镀锡导线或绝缘导线
COATING 灌封	Expoxy resin(UL94V-0) 环氧树脂 (阻燃等级 UL94V-0)
CATEGORY 类别	X2 class
REFERENCE STANDARD 引用标准	IEC384-14 GB/T14472-98 ; EN132400; UL1283
CLIMATIC CATALOGUE 气候类别	40/100/21
CAPACITANCE VERSUS RATED VOLTAGE(UR) 静电容量与额定电压	串联 (SERIES) 0.01μF~1.0μF 300VAC 并联 (PARALLEL) 0.001μF~0.68μF 3000VAC
RESISTANCE AND POWER 电阻功率及阻值	串联 (SERIES) 10~470Ω, 1/4、1/2、1.0 or 2.0 Watt 并联 (PARALLEL) 1.0~2.2 MΩ, 1/4、1/2、1Watt
VOLTAGE PROOF 耐电压	4.3*UR Unit:VDC (1 minute at 20℃)
INSULATION RESISTANCE 绝缘电阻	C≤ 0.33μF IR ≥ 15,000MΩ; C>0.33μF ,IR*C ≥ 5,000S----仅指串联类型 (Series only) (1minute at 20 °C and RH ≤ 65%)
CAPACITANCE TOLERANCE 容量误差	M=±20% K=±10% J=±5%
ENDURANCE 耐久性	The test voltage 125% shall be applied for 1000 hours in the 85 °C chamber. Each of these voltage shall be applied to each capacitor individually through a resistor of 47Ω±5%, During this period, 1000VAC 60Hz for 0.1sec be applied once each hour. After the Test: 85 °C 试验温度下, 125%UR 交流电压 1000 小时, 试验过程中, 每个电容器串联一个 47Ω 电阻。1000V 交流电压 (60HZ), 每一小时施加 0.1S 验完成后: △ C/C ≤ 10%; IR ≥ 50% of the specified value( 标称值); △ DF ≤ 0.8%(C ≤ 1μF); △ DF ≤ 0.5%(C > 1μF); (at 20 °C 1KHz)

★OUTLINE DRAWING 外形图

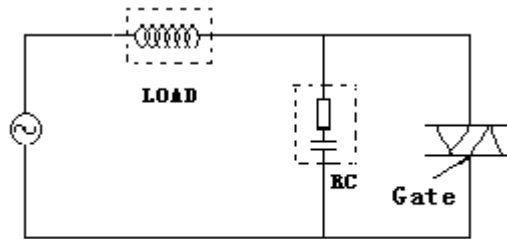
★实物图:



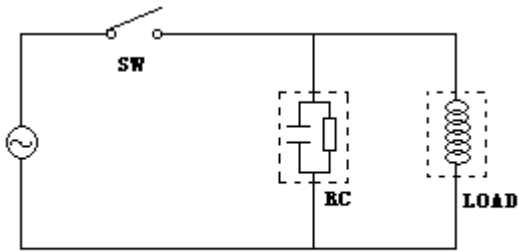
★ APPLICATION EXAMPLE 应用场合



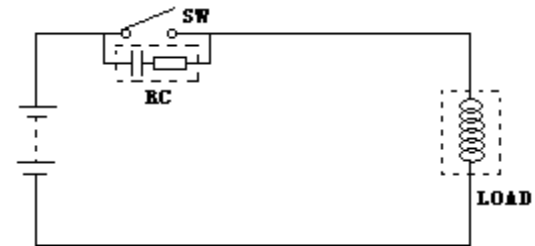
Normal application in AC circuits  
交流应用场合



In the circuits of SCR or TRIAC etc  
晶闸管、晶体管控制回路



Normal application in AC circuits  
交流应用场合



In DC circuits 直流回路

★ SPECIFICATIONS 认证通过文件及引用标准

RC -- 串联 (SERIES)

	CHINA 中国 GB/T14472-1998	CQC03001002848
	EUROPEAN ECONOMIC COMMUNITY 欧共体 IEC60384-14	SE/0364-1
	USA 美国 /CSA 加拿大 UL 1283/CSA C22.2 No.8	E221606

RC-- 并联 (PARALLEL)

	EUROPEAN ECONOMIC COMMUNITY 欧共体 IEC 60384-14	40010596
--	---	----------

SPECIAL SIZE OR ITEMS ON REQUEST 可依需求制作各种规格